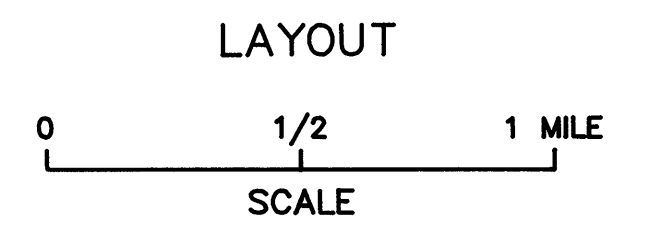
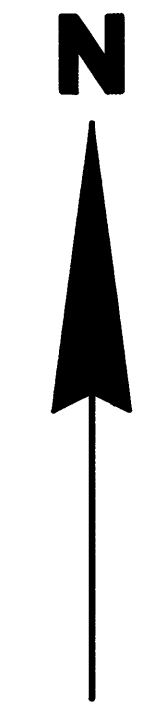
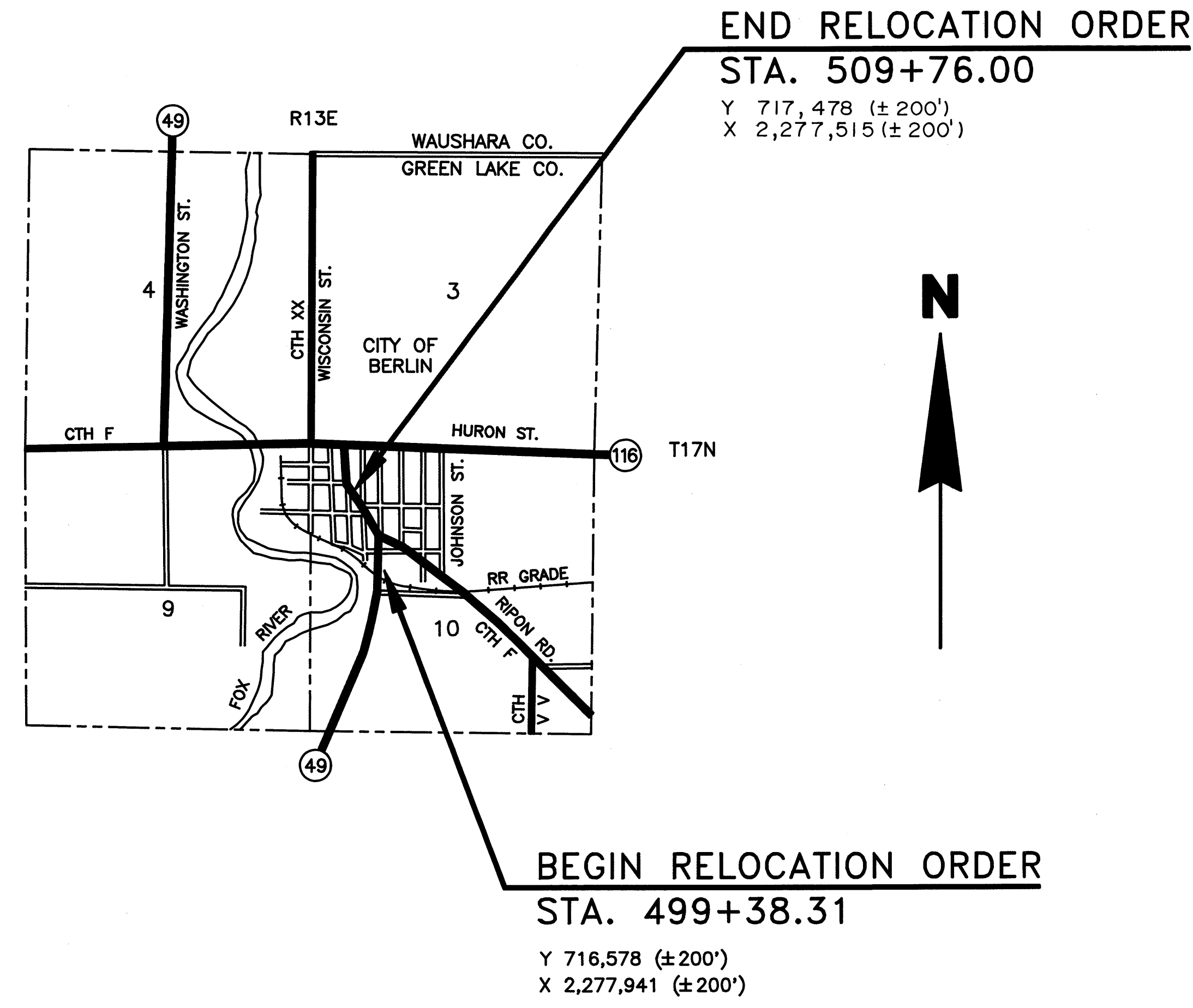
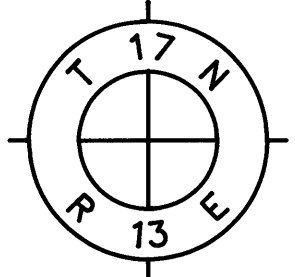


R/W PROJECT NUMBER 6210-07-21	SHEET NUMBER 4.0	TOTAL SHEETS 4.2
FEDERAL PROJECT NUMBER		
PLAT OF RIGHT OF WAY REQUIRED FOR S.T.H. 49 CITY OF BERLIN		
S.T.H. 49 6210-07-72	GREEN LAKE CO.	

CONVENTIONAL SIGNS AND ABBREVIATIONS

SECTION LINE	---	AC.	ACRES
QUARTER LINE	----	A.P.	ACCESS POINT
SIXTEENTH LINE	-----	APT.	APARTMENT
NEW REFERENCE LINE	=====	C/L	CENTERLINE
NEW R/W LINE	=====	CONC.	CONCRETE
EXISTING R/W LINE	=====	CSM	CERTIFIED SURVEY MAP
PROPERTY LINE	=====	D	DEGREE OF CURVE
CORPORATE LIMITS	//////	E	EAST
LOT AND TIE LINES	-----	ETAL	AND OTHERS
SLOPE INTERCEPT	-----	FT.	FEET
UNDERGROUND FACILITY	-----	G.	GARAGE
FENCE	-----	H.	HOUSE
LIMITED EASEMENT	-----	I.P.	IRON PIPE
BUILDING	□	L	LENGTH OF CURVE
IRON PIN	○	LC	LONG CHORD
R/W MONUMENT	●	LCB	LONG CHORD BEARING
MANHOLE	○	LT.	LEFT
BUSHES	☁	MI.	MILE
TREES (DECIDUOUS)	☪	MON.	MONUMENT
TREES (CONIFEROUS)	☪	N	NORTH
POWER POLE (COMPENSABLE)	⊕	P.C.	POINT OF CURVE
SIGN	⊕	P.I.	POINT OF INTERSECTION
POWER POLE	⊕	P.L.	PROPERTY LINE
UTILITY PEDESTAL	⊕	P.T.	POINT OF TANGENT
POINT NUMBER	○	R	RADIUS
RECORDED AS	SLANTED	R	RECORDED AS
NO ACCESS (BY ACQUISITION)	=====	REM.	REMAINING
TEMPORARY LIMITED EASEMENT	=====	RT.	RIGHT
SECTION CORNER	⊕	R/W	RIGHT OF WAY
	⊕	S	SOUTH
	⊕	SAN	SANITARY SEWER
	⊕	S.F.	SQUARE FEET
	⊕	STA.	STATION
	⊕	T	TELEPHONE
	⊕	T	TANGENT
	⊕	TEMP.	TEMPORARY
	⊕	T.L.E.	TEMPORARY LIMITED EASEMENT
	⊕	W	WEST
	⊕	X	EAST COORDINATE
	⊕	Y	NORTH COORDINATE



NET LENGTH OF CENTERLINE = 0.196 MILES

NOTES

COORDINATES ON THIS PLAT ARE REFERENCED TO AN ASSUMED DATUM. COORDINATES SHOWN ON THIS TITLE SHEET ARE REFERENCED TO THE WISCONSIN COORDINATE SYSTEM, SOUTH ZONE, AND ARE SCALED FROM USGS QUADRANGLE MAP "BERLIN, WIS." FOR IDENTIFICATION ONLY.

RIGHT OF WAY MONUMENTS ARE TYPE 2 AND ARE PLACED PRIOR TO OR AT THE TIME OF LAND TITLE TRANSFER. TYPE 2 MONUMENTS PLACED ARE 1" I.D. x 24" IRON PIPES WEIGHING 1.68 LBS/FT., UNLESS OTHERWISE NOTED.

RIGHT OF WAY BOUNDARIES ARE DEFINED WITH COURSES OF THE PERIMETER OF THE HIGHWAY LANDS REFERENCED TO THE U.S. PUBLIC LAND SURVEY OR OTHER SURVEYS OF PUBLIC RECORD.

REVISION DATE	ORIGINAL PLANS PREPARED BY
(2) 11-13-94 N.C.	GREMMER OHM INC. 908 POST ROAD PLOVER, WI 54467 715-341-4363
(3) 5-19-03 N.C.	
DATE 5/25/93	THOMAS M. BABLITCH, RLS
DATE	
	STATE OF WISCONSIN DEPARTMENT OF TRANSPORTATION
APPROVED:	
DATE 5/17/94	John Rock
DATE	DISTRICT DIRECTOR

DRAFTED BY DLR

SCHEDULE OF LANDS & INTERESTS REQUIRED

AREAS SHOWN IN THE TOTAL ACRES COLUMN MAY BE APPROXIMATE AND ARE TAKEN FROM TAX ROLLS OR OTHER AVAILABLE SOURCES (EXCEPT AS NOTED), AND MAY NOT INCLUDE LANDS OF THE OWNER WHICH ARE NOT CONTIGUOUS TO THE AREA TO BE ACQUIRED.
 (C) INDICATES CALCULATED AREA, BASED ON RECORD INFORMATION.

REVISION DATE		ROUTE	COUNTY	DATE	R/W PROJECT NUMBER	SHEET NUMBER
11-13-94 5-19-03		S.T.H. 49	GREEN LAKE	5-17-94	6210-07-21	4.1
					FEDERAL PROJECT NUMBER	
					6210-07-72	

PARCEL NUMBER	SHEET NUMBER	OWNER(S)	INTEREST REQUIRED	TOTAL SQ.FT. (EXISTING)	R/W SQUARE FEET REQUIRED			TOTAL SQ. FT. REM.	T.L.E. SQ.FT. TEMP.	P.L.E. SQ.FT. PERM.	HIGHWAY EASEMENT	REMARKS
					NEW	EXISTING	TOTAL					
9		***PARCEL DELETED***										
(2) 10	4.2	B. KENT BAUMAN	HIGHWAY EASEMENT	23,222(C)				23,222			2007	
(2) 11	4.2	AUGUST J. RICHTER, IV	FEE	100,363(C)	450	2877	3327	97,036				
12	4.2	JENNIFER R. ENKRO	FEE	26,814(C)	29	1175	1204	25,610				
(2) 15	4.2	JOHN E. SKIPCHAK & CYNTHIA L. SKIPCHAK	FEE	8818(C)	130	0	130	8,688				
16	4.2	THOMAS J. & ELIZABETH A. PARKER	FEE	8805(C)	250	0	250	8,555				
(2) 17	4.2	KURT L. KNOPF	FEE	11,610	360	705	1065	10,545				
18	4.2	FERN L. KOLPIN	FEE	8704(C)	624	1389	2013	6,691				
(2) 23	4.2	JAMES C. HOFFMAN	FEE	20,460(C)	155	12,340	12,495	7,965				

REV. PJF 5-17-94
DRAFTED BY DLR

NEW401

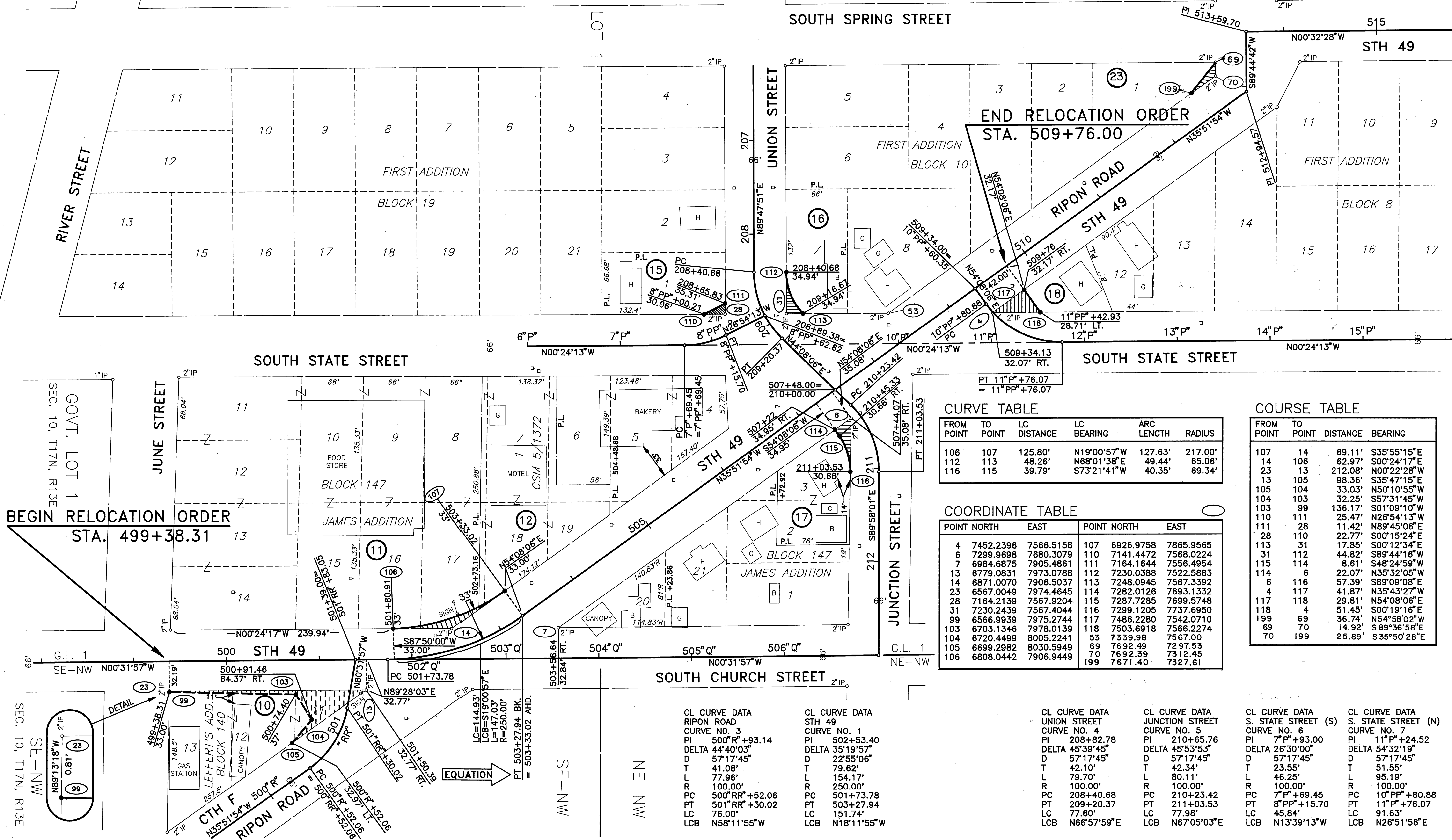
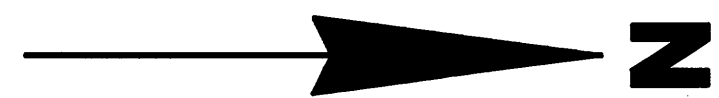
PROPERTY LINE STATIONS ARE COMPUTED FROM INFORMATION OF RECORD AND ARE APPROXIMATE ONLY.

CITY OF BERLIN
GREEN LAKE COUNTY, WISCONSIN

REVISION DATE
11-13-94
5-19-03

ROUTE COUNTY DATE
S.T.H. 49 GREEN LAKE 5-17-94
SCALE, FT. GRID FACTOR
0 50 100 0.99994380

R/W PROJECT NUMBER SHEET NUMBER
6210-07-21 4.2
FEDERAL PROJECT NUMBER
6210-07-72



CURVE TABLE

FROM POINT	TO POINT	LC DISTANCE	LC BEARING	ARC LENGTH	RADIUS
106	107	125.80'	N19°00'57"W	127.63'	217.00'
112	113	48.26'	N68°01'38"E	49.44'	65.06'
116	115	39.79'	S73°21'41"W	40.35'	69.34'

COURSE TABLE

FROM POINT	TO POINT	DISTANCE	BEARING
107	14	69.11'	S35°55'15"E
14	106	62.97'	S00°24'17"E
23	13	212.08'	N00°22'28"W
13	105	98.36'	S35°47'15"E
105	104	33.03'	N50°10'55"W
104	103	32.25'	S57°31'45"W
103	99	136.17'	S01°09'10"W
110	111	25.47'	N26°54'13"W
111	28	11.42'	N89°45'06"E
28	110	22.77'	S00°15'24"E
113	31	17.85'	S00°12'34"E
31	112	44.82'	S89°44'16"W
115	114	8.61'	S48°24'59"W
114	6	22.07'	N35°32'05"W
6	116	57.39'	S89°09'08"E
4	117	41.87'	N35°43'27"W
117	118	29.81'	N54°08'06"E
118	4	51.45'	S00°19'16"E
199	69	36.74'	N54°58'02"W
69	70	14.92'	S89°36'58"E
70	199	25.89'	S35°50'28"E

COORDINATE TABLE

POINT	NORTH	EAST	POINT	NORTH	EAST
4	7452.2396	7566.5158	107	6926.9758	7865.9565
6	7299.9698	7680.3079	110	7141.4472	7568.0224
7	6984.6875	7905.4861	111	7164.1644	7556.4954
13	6779.0831	7973.0788	112	7230.0388	7522.5883
14	6871.0070	7906.5037	113	7248.0945	7567.3392
23	6567.0049	7974.4645	114	7282.0126	7693.1332
28	7164.2139	7567.9204	115	7287.7285	7699.5748
31	7230.2439	7567.4044	116	7299.1205	7737.6950
99	6566.9939	7975.2744	117	7486.2280	7542.0710
103	6703.1346	7978.0139	118	7503.6918	7566.2274
104	6720.4499	8005.2241	53	7339.98	7567.00
105	6699.2982	8030.5949	69	7692.49	7297.53
106	6808.0442	7906.9449	70	7692.39	7312.45
			199	7671.40	7327.61

CL CURVE DATA	CL CURVE DATA	CL CURVE DATA	CL CURVE DATA	CL CURVE DATA	CL CURVE DATA
RIPON ROAD CURVE NO. 3 PI 500°R+93.14 DELTA 44°40'03" D 57°17'45" T 41.08' L 77.96' R 100.00' PC 500°R+52.06 PT 501°R+30.02 LC 76.00' LCB N58°11'55"W	STH 49 CURVE NO. 1 PI 502+53.40 DELTA 35°19'57" D 22°55'06" T 79.62' L 154.17' R 250.00' PC 501+73.78 PT 503+27.94 LC 151.74' LCB N18°11'55"W	UNION STREET CURVE NO. 4 PI 208+82.78 DELTA 45°39'45" D 57°17'45" T 42.10' L 79.70' R 100.00' PC 208+40.68 PT 209+20.37 LC 77.98' LCB N66°57'59"E	JUNCTION STREET CURVE NO. 5 PI 210+65.76 DELTA 45°53'53" D 57°17'45" T 42.34' L 80.11' R 100.00' PC 210+23.42 PT 211+03.53 LC 77.98' LCB N67°05'03"E	S. STATE STREET (S) CURVE NO. 6 PI 7°P+93.00 DELTA 26°30'00" D 57°17'45" T 23.55' L 46.25' R 100.00' PC 7°P+69.45 PT 8°PP+15.70 LC 45.84' LCB N13°39'13"W	S. STATE STREET (N) CURVE NO. 7 PI 11°P+24.52 DELTA 54°32'19" D 57°17'45" T 51.55' L 95.19' R 100.00' PC 10°PP+80.88 PT 11°P+76.07 LC 91.63' LCB N26°51'56"E

REV. DLR 11-13-94
REV. PUF 5-17-94
DRAFTED BY DLR
COMPUTED BY TLL
SURVEYED BY TMB
NEW402