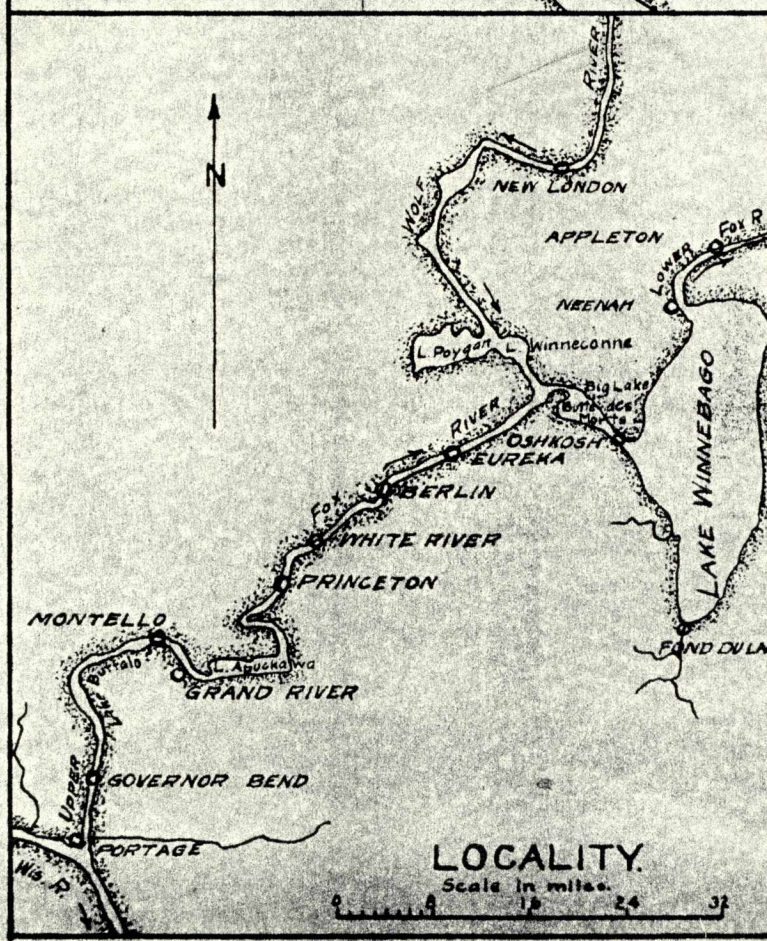
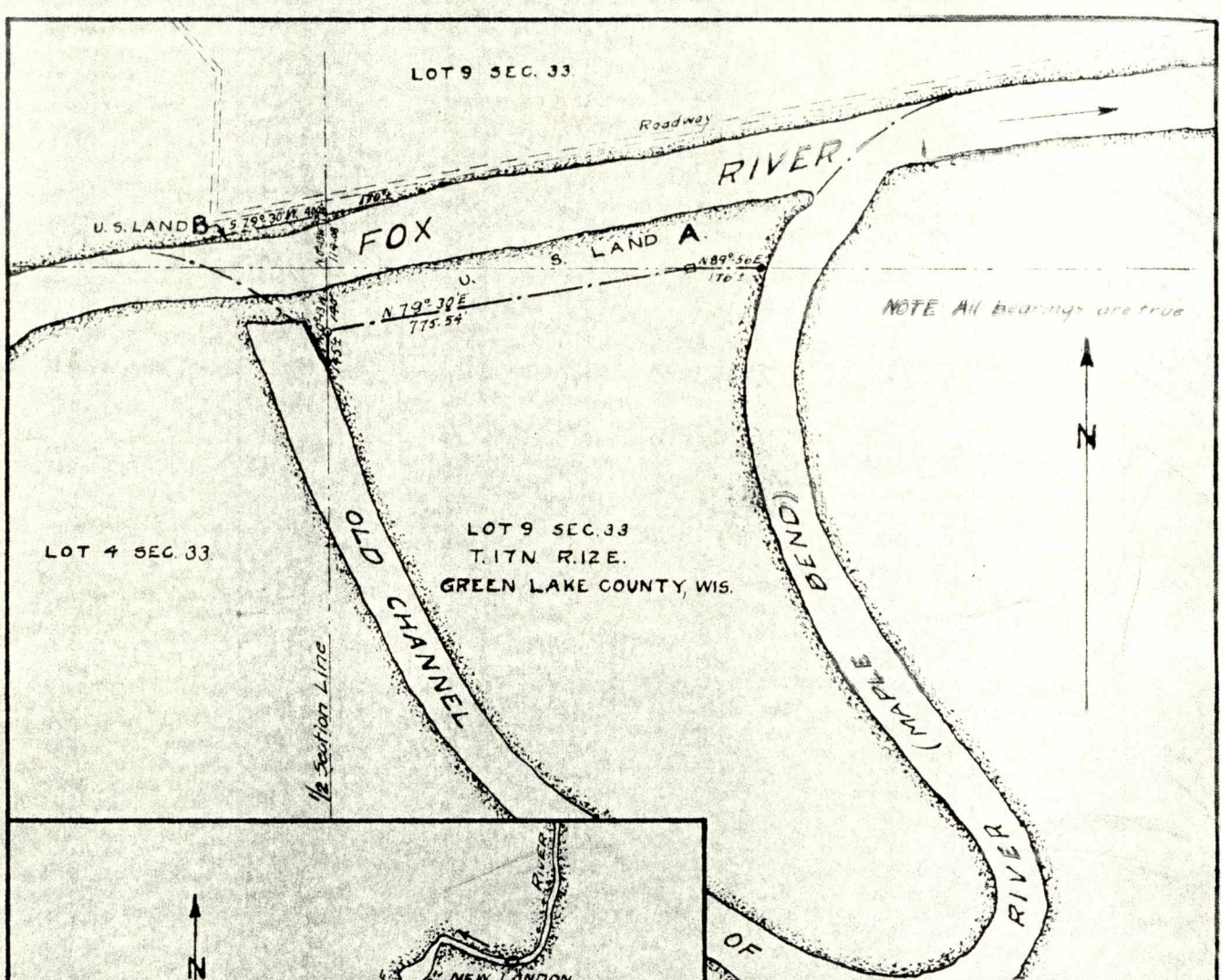


65 2

P220-82/4

14-220-82/4



**TRACTS A & B**

Scale in feet

0 100 400 800

TITLES ACQUIRED AS FOLLOWS:  
 Tract A by deeds dated Dec. 20, 1878,  
 From Gustave and Augusta Reesch (F.R.S. 68, 1878/1)  
 From Gottlieb and Bertha Thiel (F.R.S. 68, 1878/3)  
 From John L. and Hattie Dumdie (F.R.S. 68, 1878/7)  
 Tract B by deeds dated Dec. 20, 1878,  
 From Jacob and Maggie Bartol (F.R.S. 68, 1878/5)  
 From John L. and Hattie Dumdie (F.R.S. 68, 1878/7)

Area A = 3.38 acres.  
 Area B = 0.16 acres.

□ = Stone Monument  
 ○ = Iron

**U.S. LAND**  
 Tracts A & B  
 1/2 MILE BELOW WHITE RIVER LOCK,  
 FOX RIVER, WIS.

In sheet. Sheet 1. Scales as noted.  
 U.S. Engineer Office, Milwaukee, Wis. March, 1924  
 Submitted: Submitted:  
*Earl M. Nixon* *G. M. D. Burkley*  
 Asst. Engr. Major, Corps of Engrs.  
 To accompany letter dated April 11, 1924. File no. 45-A-1.