

INDEX OF SHEETS

- SHEET NO. 1 TITLE
- SHEET NO. 2 TYPICAL CROSS SECTIONS
- SHEET NO. 3 ESTIMATE OF QUANTITIES
- SHEET NO. 3A MISCELLANEOUS QUANTITIES
- SHEET NO. — RIGHT OF WAY PLAT
- SHEET NO. 4-7 PLAN AND PROFILE STA. 0+11 TO STA. 106+09.7
- SHEET NO. 8-8.4 STANDARD DETAILS
- SHEET NO. — DRAINAGE STRUCTURES
- SHEET NO. 9-23 CROSS SECTIONS

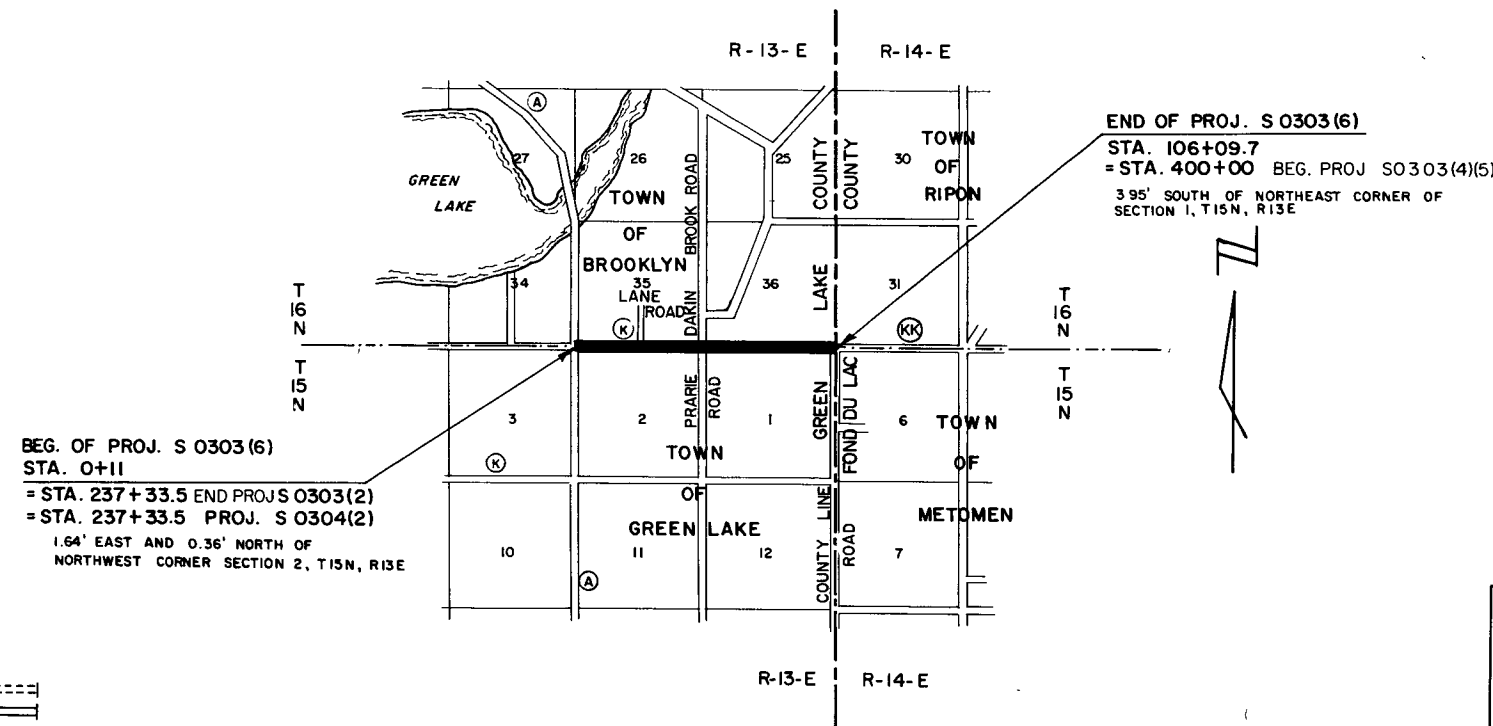


STATE OF WISCONSIN
STATE HIGHWAY COMMISSION OF WISCONSIN

PLAN AND PROFILE OF PROPOSED
C.T.H. "A" — EAST COUNTY LINE ROAD
C.T.H. "K"
GREEN LAKE COUNTY
PROJECT S 0303(6)

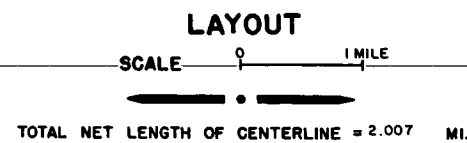
COUNTY AND HIGHWAY	ROUTE AND SECTION	CLASS AND AGREEMENT		# P.R. REGION DIVISION	SHEET NUMBER	TOTAL SHEETS
		STATE	FEDERAL			
24.6	303.0		11.6	4 WIS.	1	23

PLAN 1 IN. = 100 FT.
PROFILE HOR. 1 IN. = 100 FT. VERT. 1 IN. = 10 FT.
CROSS SECTIONS HOR. 1 IN. = 5 FT. VERT. 1 IN. = 5 FT.



DESIGN	DESIGNATION	
AD.T.	(1967)	= 850
AD.T.	(1987)	= 1,700
D.H.V.		= 255
D.		= 65%
T.		= 9.2%
V.		= 60 M.P.H.

CONVENTIONAL SIGNS	
STATE LINE	— — — — —
COUNTY LINE	— — — — —
TOWNSHIP OR RANGE LINE	— — — — —
SECTION LINE	— — — — —
NEW RIGHT OF WAY LINE	— — — — —
PRESENT RIGHT OF WAY LINE	— — — — —
WIRE FENCE { WOVEN	— — — — —
{ BARBED	— — — — —
LOT LINE	— — — — —
CORPORATE OR CITY LIMITS	— — — — —
PROPERTY LINE	— — — — —
TRAVELED WAY OR P.E.	— — — — —
RAILROADS	— — — — —
BASE OR SURVEY LINE	— — — — —
CULVERTS IN PLACE	— — — — —
CULVERTS REQUIRED	— — — — —
DROP INLET	— — — — —
POWER POLE	— — — — —
TELEPHONE OR TELEGRAPH POLE	— — — — —
RIGHT OF WAY MARKERS	— — — — —
REFERENCE STAKE FOR HUBS ONLY	— — — — —
MARSH	— — — — —
HEDGE	— — — — —
TREES	— — — — —
GROUND ELEVATION	DATUM LINE 73.9
GRADE ELEVATION	DATUM LINE 73.9



STATE HIGHWAY COMMISSION OF WISCONSIN MADISON, WIS.	
APPROVED FOR GREEN LAKE COUNTY BY:	SURVEYOR _____ NOTE BOOK _____ DIVISION COMPUTER _____ M. O. CHECKER W. H. B. _____ DISTRICT CHECKER _____ CORRECT _____
DATE <u>1/10/67</u> <u>Harold H. Stroobin</u> COMMISSIONER	CORRECT: DATE <u>4/22/67</u> <u>D. J. Caslake</u> DISTRICT ENGINEER
PLANS PREPARED BY: MID-STATE ASSOCIATES	RECOMMENDED FOR APPROVAL: DATE <u>5/2/67</u> <u>E. J. Byrd</u> CHIEF DESIGN ENGINEER
BARABOO, WISCONSIN	APPROVED: DATE <u>5/2/67</u> <u>A. J. Summister</u> STATE HIGHWAY ENGINEER
DATE <u>Feb 14, 1967</u> <u>Donna G. Lewis</u> DATE PROF. ENGINEER	DEPARTMENT OF COMMERCE BUREAU OF PUBLIC ROADS
	APPROVED: _____ DATE _____ DIVISION ENGINEER

PROJECT S 0303(6)